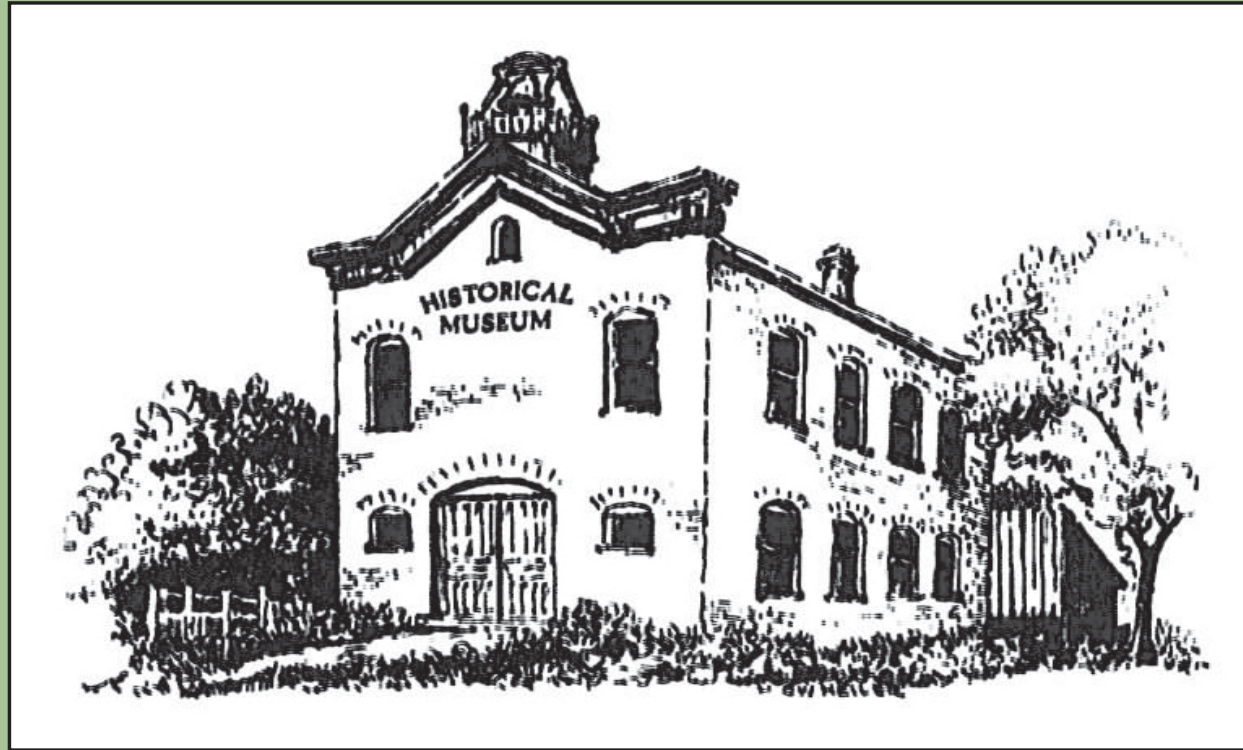


# SAVE THE PAST FOR THE FUTURE



## Grayslake Historical Society

---

164 HAWLEY STREET - P.O. BOX 185 - GRAYSLAKE, ILLINOIS 60030-0185 - 847-223-7663

*Dear Friend,*

*The 115<sup>th</sup> anniversary of Grayslake's founding will take place in 2010. To mark this milestone, honor our community's history, and preserve the records and artifacts of that history for future generations, the Grayslake Historical Society and the Village of Grayslake have developed concept plans for a new Grayslake Heritage Center.*

*The included Heritage Center Concept Plan will restore and preserve the Village's first Village Hall on Hawley Street, home of the current Historical Museum. It will add 7,600 square feet of exposition, education, archival, and meeting spaces, and provide a community room for public use. These facilities will allow the Historical Society to greatly expand its programs, services, and displays. The new Heritage Center will also be a valuable cultural amenity in our historic downtown area.*

*The Esper A. Petersen Foundation has graciously contributed \$250,000 toward this project. In addition, the Village of Grayslake has pledged \$1,400,000 toward the construction of the new Heritage Center. These donations represent an excellent start, but to make the Heritage Center a reality, **we need your support**. Please take a moment to review the information on the opportunities for support of the Heritage Center Project. We hope we can count on your support. **The Grayslake Historical Society is a 501(c)3 organization.***

*Sincerely,*

*The Heritage Center Project Committee*

## Opportunities for Support:

- Heritage Center Curator- \$25,000 each. Individual wall plaque recognition.
- Heritage Center Archivist- \$10,000 each. Individual wall plaque recognition.
- Heritage Center Preservationist- \$5,000 each. Individual wall plaque recognition.
- Heritage Center Historian- \$1,000 each. Individual wall plaque recognition.
- Heritage Center Docent- Engraved name brick pavers- \$150 per brick.

Individuals, businesses, foundations, and community or civic organizations are invited to support the Grayslake Heritage Center Project.

Heritage Center Project Committee approval of plaque or brick wording is required.

The size of the individual wall plaque is determined by the level of donor participation.

**Special contributor-** If a single contributor wishes to contribute beyond the Heritage Center Curator level, special recognition can be arranged on an individual basis.

Contact the Grayslake Historical Society (847)223-7663 or the Village of Grayslake (847)223-8515 for more information or to arrange for your support of the Grayslake Heritage Center Project.

**The Grayslake Historical Society is a 501(c)3 Organization**





## The Future Grayslake Heritage Center

NOT FOR CONSTRUCTION

## About the Grayslake Historical Society:

- Founded in 1976
- Dedicated to collecting, preserving, and exhibiting the history of the Village of Grayslake
- Educates and informs the community of the Village's history
- Operates the Grayslake Municipal Historical Museum, 164 Hawley Street, in the original Grayslake Village Hall
- Built the Museum Annex with money donated by the community
- Publishes books about the history of Grayslake
- Receives awards for historical publications and projects
- Participates in community events
- Hosts historical programs for the community
- Gives museum tours to school, scout and community groups
- Helps maintain the Grayslake Cemetery
- Associated with local, regional, and state historical groups
- Presents an annual "Living History Tour" of the Grayslake Cemetery
- Hosts special exhibits during community events
- Assists the Museum in rotating exhibits
- Ensures that the museum is open during scheduled times



Grayslake Historical Society



I would graciously like to take the opportunity to contribute to this important Heritage Center Project. Please accept my Contribution as a:

<b>Heritage Center Curator</b> (Individual wall plaque recognition)	\$25,000 and above	_____
<b>Heritage Center Archivist</b> (Individual wall plaque recognition)	\$10,000 and above	_____
<b>Heritage Center Preservationist</b> (Individual wall plaque recognition)	\$5,000 and above	_____
<b>Heritage Center Historian</b> (Individual wall plaque recognition)	\$ 1,000 and above	_____
<b>Heritage Center Docent</b> (Engraved name brick pavers, \$150 per brick)	\$ 150	_____

Enclosed is my check made payable to: **Grayslake Historical Society Heritage Center Fund**

For: \$ \_\_\_\_\_

Mail to: State Bank of the Lakes  
Attn: Grayslake Historical Society Heritage Center Fund  
50 Commerce Drive  
Grayslake, IL 60030

I would like my name to be spelled this way: \_\_\_\_\_

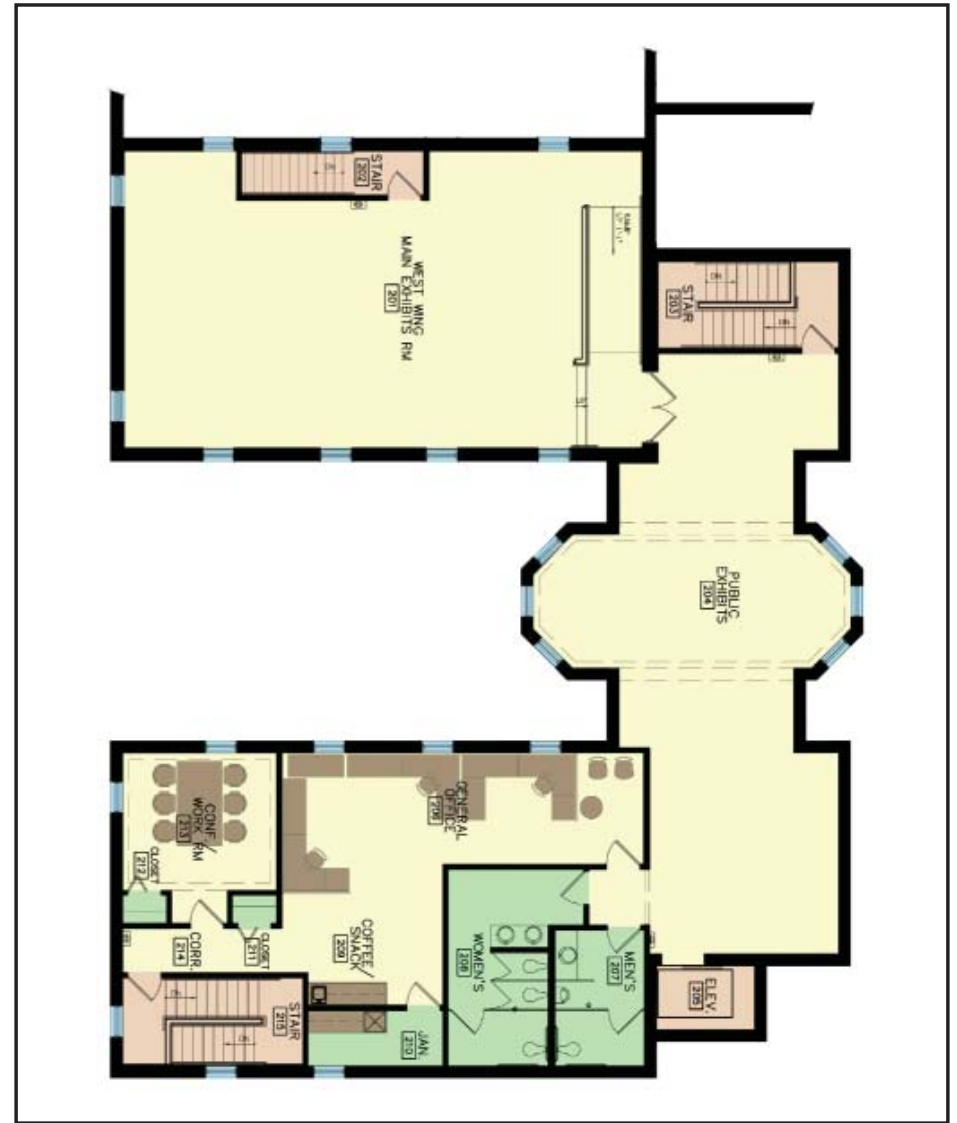
Name: \_\_\_\_\_ Street: \_\_\_\_\_

City: \_\_\_\_\_ State: \_\_\_\_ Zip: \_\_\_\_\_ Phone: \_\_\_\_\_

**The Grayslake Historical Society is a 501(c)3 Organization**



**First Floor**



**Second Floor**

**Proposed Floor Plans**

NOT FOR CONSTRUCTION